



# CIV 2019



Federazione  
Motociclistica  
Italiana  
[www.federmoto.it](http://www.federmoto.it)

[www.civ.tv](http://www.civ.tv)

# PLYZF-19

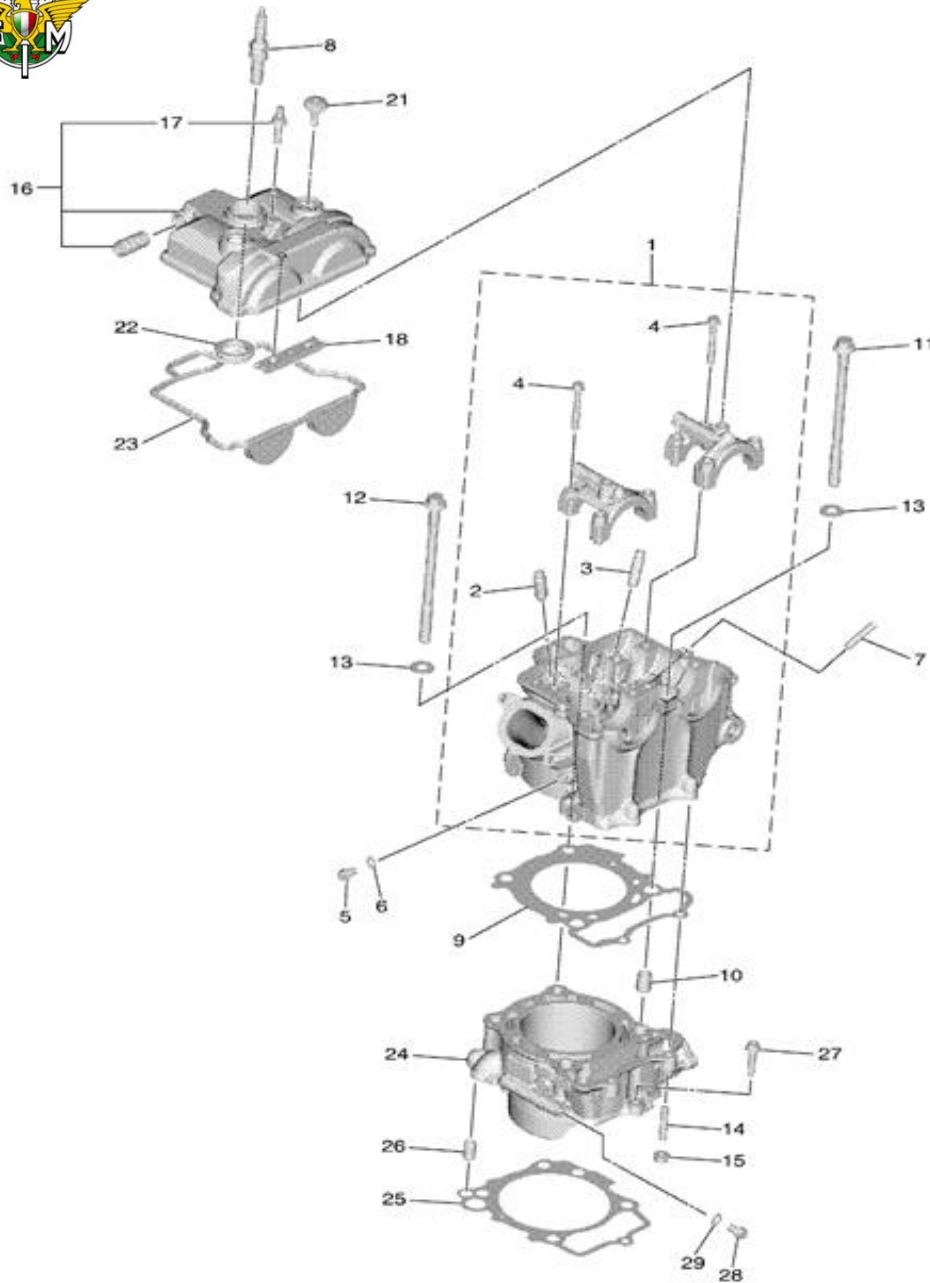
VERS. 002

## Parts list YZ250F MY2019 PreMoto3



# YAMAHA

Contatto Fornitore Ufficiale (Filiale Italiana Yamaha Motor Europe N.V.) Campionato Italiano PreMoto3 2019: [luca.lussana@yamaha-motor.it](mailto:luca.lussana@yamaha-motor.it)



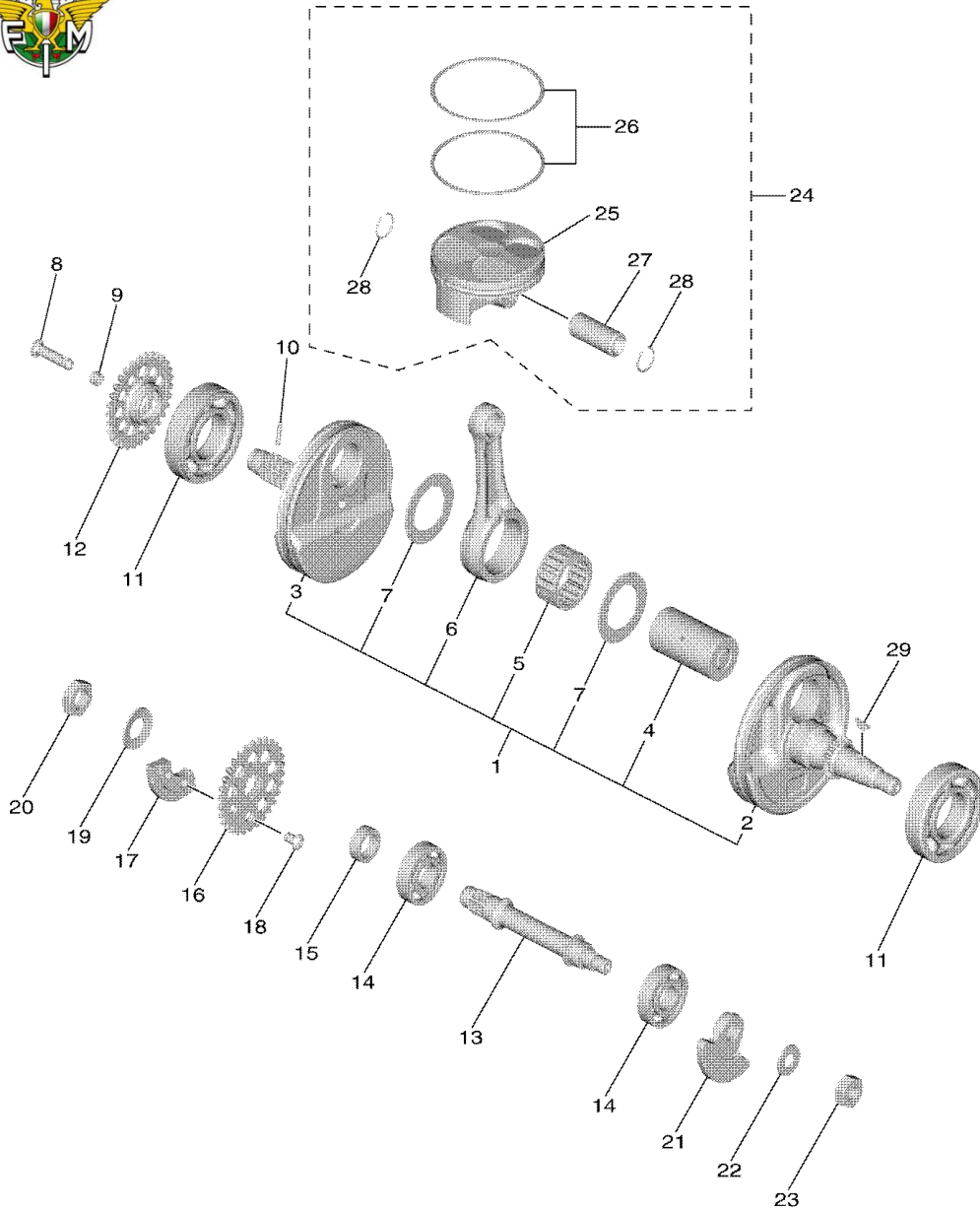
RIF.	CODICE	DESCRIZIONE	QUANTITA'	CONFIGURAZIONE
1	B7B-11101-09	CYLINDER HEAD ASSY	1	FICHES *
2	5TA-11134-10	GUIDE, VALVE 2	2	STANDARD
3	3D7-11133-10	GUIDE, VALVE 1	2	STANDARD
4	90105-06027	BOLT, FLANGE	8	LIBERO
5	95E32-06010	BOLT, FLANGE DEEP RECESS	1	LIBERO
6	90430-06014	GASKET	1	LIBERO
7	90116-06037	BOLT, STUD	2	LIBERO
8	94701-00424	PLUG, SPARK (NGK LMAR9E-J)	1	STANDARD
9	B7B-11181-00	GASKET, CYLINDER HEAD 1	1	STANDARD
10	93612-16254	PIN, DOWEL	2	LIBERO
11	90105-09004	BOLT, FLANGE	3	FICHES**
12	90105-09002	BOLT, FLANGE	1	FICHES**
13	90201-096J9	WASHER, PLATE	4	LIBERO
14	90116-06037	BOLT, STUD	2	LIBERO
15	95702-06500	NUT, FLANGE	2	LIBERO
16	B7B-11190-00	COVER, CYLINDER HEAD 1	1	STANDARD
17	90116-06048	BOLT, STUD	1	LIBERO
18	5BE-12241-00	GUIDE, STOPPER 2	1	STANDARD
21	5UM-1119E-00	BOLT, COVER HEAD	2	LIBERO
22	1SM-11194-00	GASKET, HEAD COVER 2	1	LIBERO
23	1SM-11193-00	GASKET, HEAD COVER 1	1	LIBERO
24	B7B-11311-00	CYLINDER 1	1	FICHES***
25	B7B-11351-00	GASKET, CYLINDER	1	STANDARD
26	99530-10116	PIN, DOWEL	2	LIBERO
27	90110-06380	BOLT, HEXAGON SOCKET HEAD	1	LIBERO
28	95E32-06010	BOLT FLANGE	1	LIBERO
29	90430-06014	GASKET	1	LIBERO

\* <https://2.228.32.210:5001/sharing/qtpLCQpFj>  
 \*\* <https://2.228.32.210:5001/sharing/AbUtWXX1W>  
 \*\*\* <https://2.228.32.210:5001/sharing/S9wuTPefs>

N.B. PROCEDERE ANCHE IN CASO DI AVVISO DI CONNESSIONE NON PROTETTA (SITO NON SICURO)



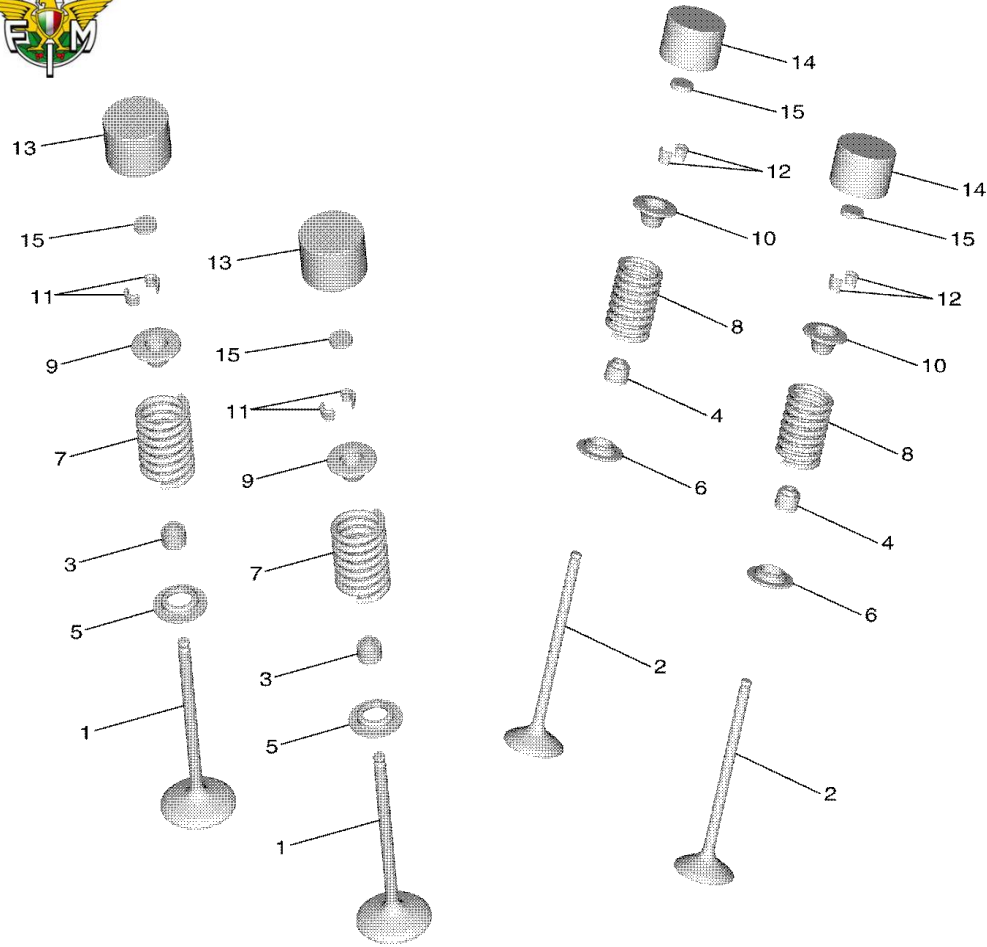
## CRANKSHAFT & PISTON



RIF.	CODICE	DESCRIZIONE	QUANTITA'	CONFIGURAZIONE
1	B7B-11400-00	CRANKSHAFT ASSY	1	STANDARD
2	B7B-11412-00	CRANK 1	1	STANDARD
3	B7B-11422-00	CRANK 2	1	STANDARD
4	1SM-11681-00	PIN, CRANK 1	1	STANDARD
5	93310-63097	BEARING	1	STANDARD
6	SM-11651-20	ROD, CONNECTING	1	STANDARD
7	90209-30011	WASHER	2	STANDARD
8	90240-07105	PIN, CLEVIS	1	STANDARD
9	90501-070A2	SPRING, COMPRESSION	1	STANDARD
10	93602-13177	PIN, DOWEL	1	STANDARD
11	93306-20648	BEARING	2	LIBERO
12	1SM-11536-10	GEAR, DRIVE	1	STANDARD
13	1SM-11455-10	SHAFT 1	1	STANDARD
14	93306-20351	BEARING	2	STANDARD
15	90387-175R2	COLLAR	1	STANDARD
16	1SM-11531-00	GEAR, BALANCE WEIGHT	1	STANDARD
17	1SM-11454-00	WEIGHT 1	1	STANDARD
18	90149-06083	SCREW	2	STANDARD
19	90208-14033	WASHER, CONICAL SPRING	1	STANDARD
20	90170-14171	NUT	1	STANDARD
21	1SM-11464-00	WEIGHT 2	1	STANDARD
22	90208-10001	WASHER, CONICAL SPRING	1	STANDARD
23	90170-10012	NUT	1	STANDARD
24	B7B-116A0-00	PISTON ASSY	1	STANDARD
25	B7B-11631-00	PISTON (STD)	1	STANDARD
26	1SM-11603-00	PISTON RING SET (STD)	1	STANDARD
27	1SM-11633-20	PIN, PISTON	1	STANDARD
28	93450-17129	CIRCLIP	2	STANDARD
29	90280-03006	KEY WOODRUFF	1	STANDARD



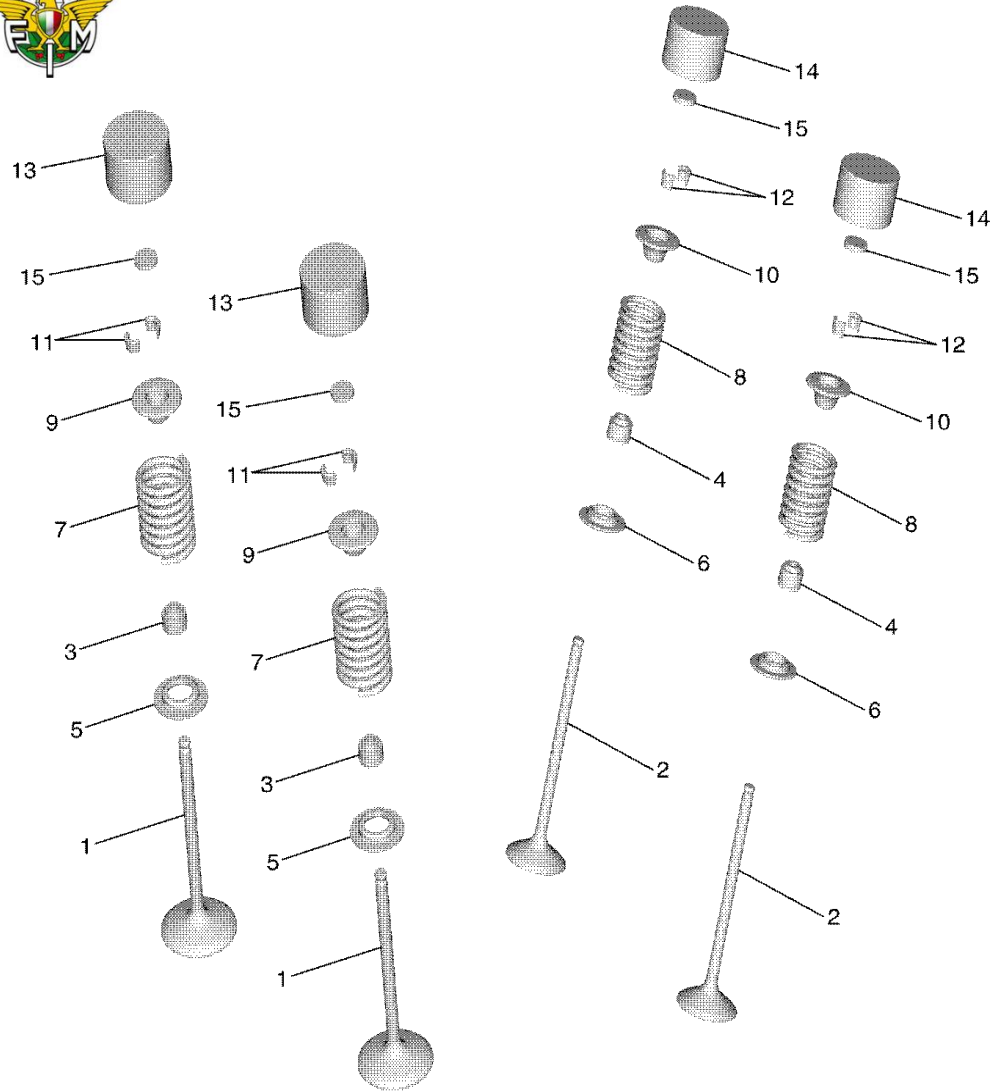
# VALVE



RIF.	CODICE	DESCRIZIONE	QUANTITA'	CONFIGURAZIONE
1	B7B-12111-00	VALVE, INTAKE	2	STANDARD
2	1SM-12121-10	VALVE, EXHAUST	2	STANDARD
3	33M-12119-00	SEAL, VALVE STEM	2	STANDARD
4	4TE-12119-00	SEAL, VALVE STEM	2	STANDARD
5	B7B-12116-00	SEAT, VALVE SPRING	2	STANDARD
6	1SM-12126-00	SEAT, VALVE SPRING 2	2	STANDARD
7	B7B-12113-00	SPRING, VALVE INNER	2	STANDARD
8	B7B-12114-00	PRING, VALVE OUTER	2	STANDARD
9	5JW-12117-00	RETAINER, VALVE SPRING	2	STANDARD
10	1SM-12127-00	RETAINER, VALVE SPRING	2	STANDARD
11	1AA-12118-00	VALVE SPRING RETAINER	4	STANDARD
12	1WG-12118-00	LOCK, VALVE SPRING RETAINER	4	STANDARD
13	BR9-12153-00	LIFTER, VALVE	2	STANDARD
14	5EB-12153-10	LIFTER, VALVE	2	STANDARD
15	3LD-12168-00	PAD, ADJUSTING (1.20)	4	LIBERO
15	3LD-12168-20	PAD, ADJUSTING (1.25)	4	LIBERO
15	3LD-12168-40	PAD, ADJUSTING (1.30)	4	LIBERO
15	3LD-12168-60	PAD, ADJUSTING (1.35)	4	LIBERO
15	3LD-12168-80	PAD, ADJUSTING (1.40)	4	LIBERO
15	3LD-12168-A0	PAD, ADJUSTING (1.45)	4	LIBERO
15	3LD-12168-F0	PAD, ADJUSTING (1.50)	4	LIBERO
15	3LD-12168-H1	PAD, ADJUSTING (1.55)	4	LIBERO
15	3LD-12168-K1	PAD, ADJUSTING (1.60)	4	LIBERO
15	3LD-12168-M1	PAD, ADJUSTING (1.65)	4	LIBERO
15	3LD-12168-R1	PAD, ADJUSTING (1.70)	4	LIBERO
15	3LD-12168-U1	PAD, ADJUSTING (1.75)	4	LIBERO
15	3LD-12168-W1	PAD, ADJUSTING (1.80)	4	LIBERO



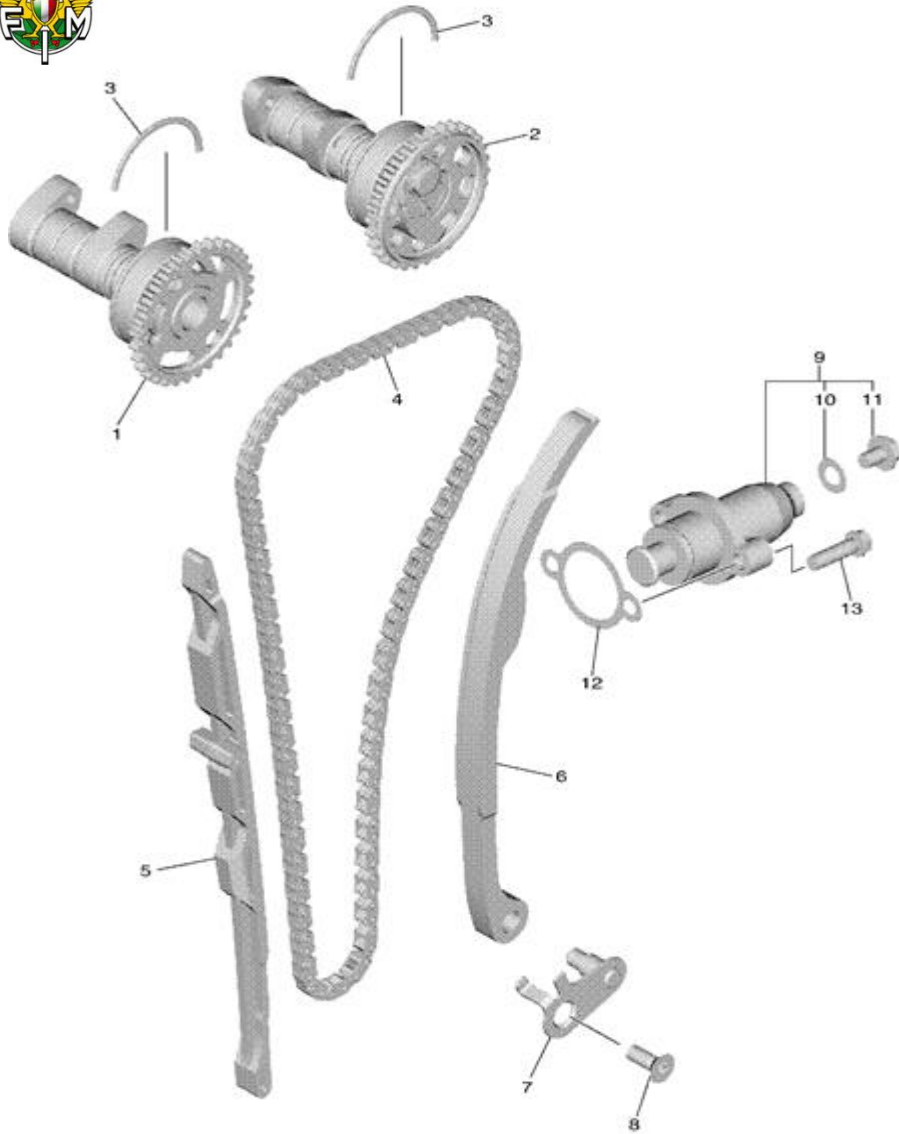
VALVE



RIF.	CODICE	DESCRIZIONE	QUANTITA'	CONFIGURAZIONE
15	3LD-12168-Y1	PAD, ADJUSTING (1.85)	4	LIBERO
15	3LD-12169-11	PAD, ADJUSTING (1.90)	4	LIBERO
15	3LD-12169-31	PAD, ADJUSTING (1.95)	4	LIBERO
15	3LD-12169-50	PAD, ADJUSTING (2.00)	4	LIBERO
15	3LD-12169-70	PAD, ADJUSTING (2.05)	4	LIBERO
15	3LD-12169-90	PAD, ADJUSTING (2.10)	4	LIBERO
15	3LD-12169-E0	PAD, ADJUSTING (2.15)	4	LIBERO
15	3LD-12169-G0	PAD, ADJUSTING (2.20)	4	LIBERO
15	3LD-12169-J0	PAD, ADJUSTING (2.25)	4	LIBERO
15	3LD-12169-L0	PAD, ADJUSTING (2.30)	4	LIBERO
15	3LD-12169-N0	PAD, ADJUSTING (2.35)	4	LIBERO
15	3LD-12169-T0	PAD, ADJUSTING (2.40)	4	LIBERO



## CAMSHAFT & CHAIN

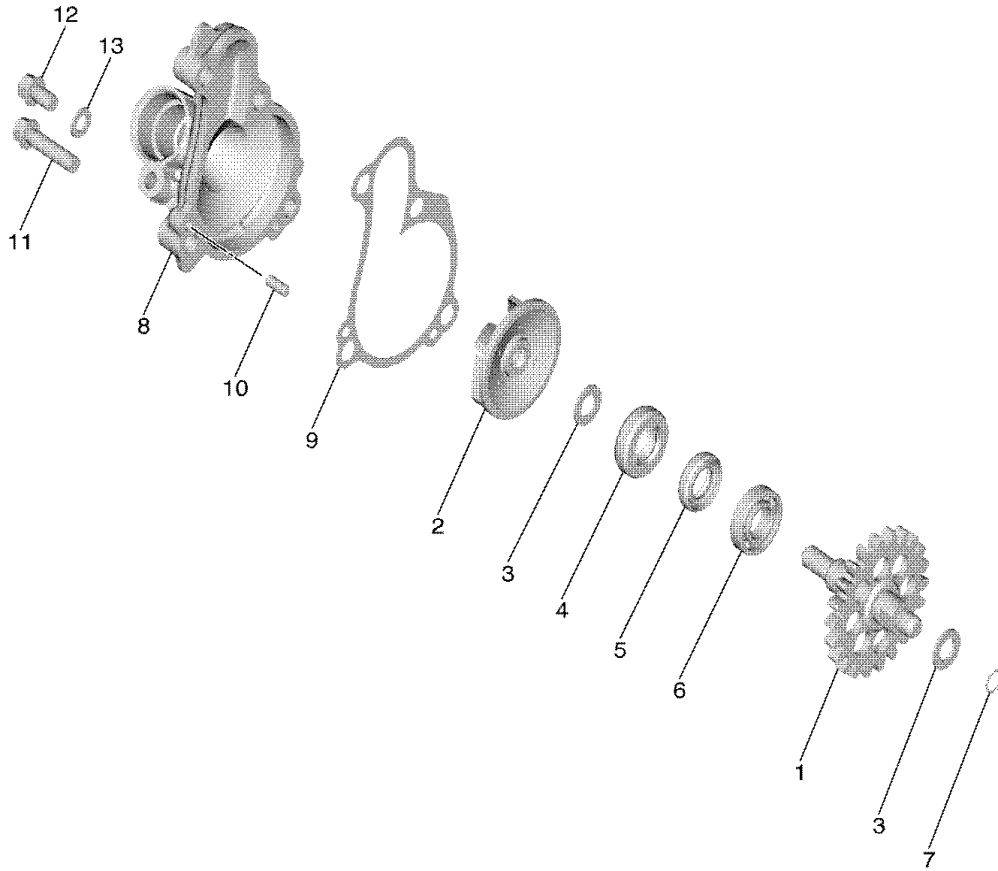


RIF.	CODICE	DESCRIZIONE	QUANTITA'	CONFIGURAZIONE
1	B7B-12170-00	CAMSHAFT ASSY 1	1	STANDARD
2	B7B-12180-00	CAMSHAFT ASSY 2	1	STANDARD
3	93440-41178	CIRCLIP	2	STANDARD
4	94591-57114	CHAIN	1	STANDARD
5	1SM-12251-00	DAMPER, CHAIN 1	1	STANDARD
6	B7B-12252-00	DAMPER, CHAIN 2	1	STANDARD
7	1SL-12233-00	PLATE, GUIDE STOPPER 1	1	STANDARD
8	90151-06024	SCREW, COUNTERSUNK	1	STANDARD
9	B7B-12210-01	TENSIONER ASSY, CAM CHAIN	1	STANDARD
10	5SL-12214-00	GASKET	1	LIBERO
11	5EL-12228-00	BOLT	1	STANDARD
12	4FM-12213-00	GASKET, TENSIONER CASE	1	LIBERO
13	95E32-06025	BOLT, FLANGE DEEP RECESS	2	LIBERO



## WATER PUMP

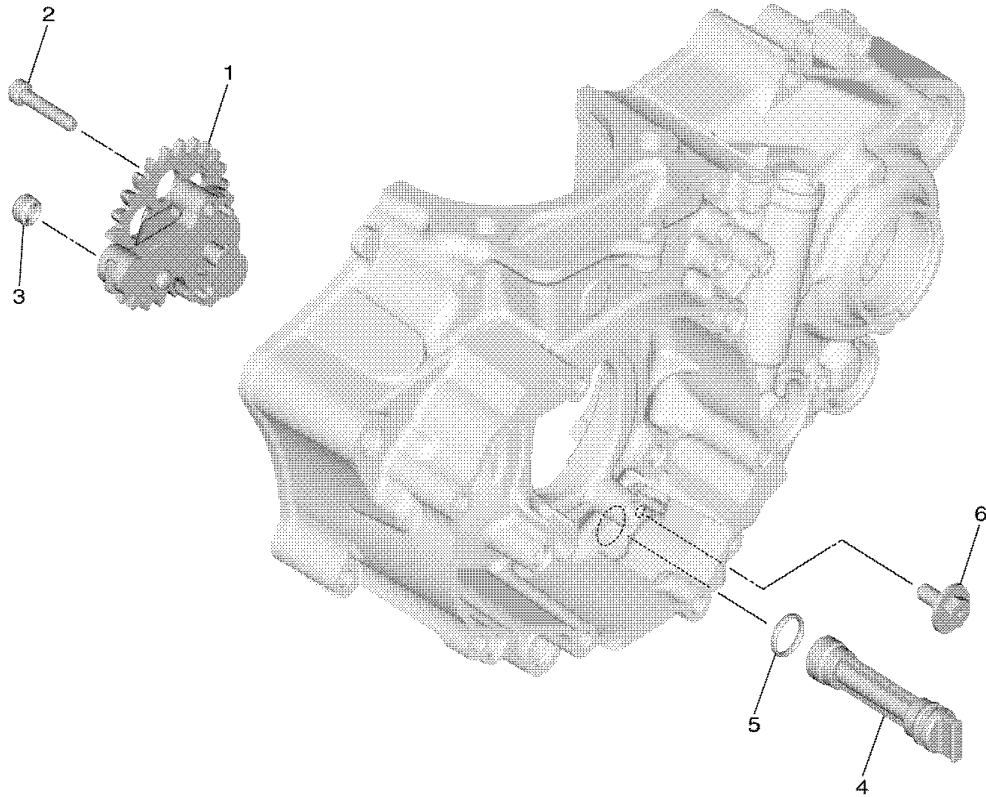
7



RIF.	CODICE	DESCRIZIONE	QUANTITA'	CONFIGURAZIONE
1	B7B-12459-00	GEAR, IMPELLER SHAFT	1	STANDARD
2	B7B-12451-00	IMPELLER, WATER PUMP	1	STANDARD
3	90201-08512	WASHER, PLATE	2	STANDARD
4	93102-11008	OIL SEAL	1	STANDARD
5	93102-12442	OIL SEAL	1	STANDARD
6	93306-90105	BEARING	1	LIBERO
7	93440-07182	CIRCLIP	1	STANDARD
8	33D-12422-00	COVER, HOUSING	1	STANDARD
9	33D-12427-00	GASKET, HOUSING COVER 1	1	LIBERO
10	93604-10011	PIN, DOWEL	2	LIBERO
11	95E32-06025	BOLT, FLANGE DEEP RECESS	4	LIBERO
12	95E32-06010	BOLT, FLANGE DEEP RECESS	1	LIBERO
13	90430-06014	GASKET	1	LIBERO



## OIL PUMP

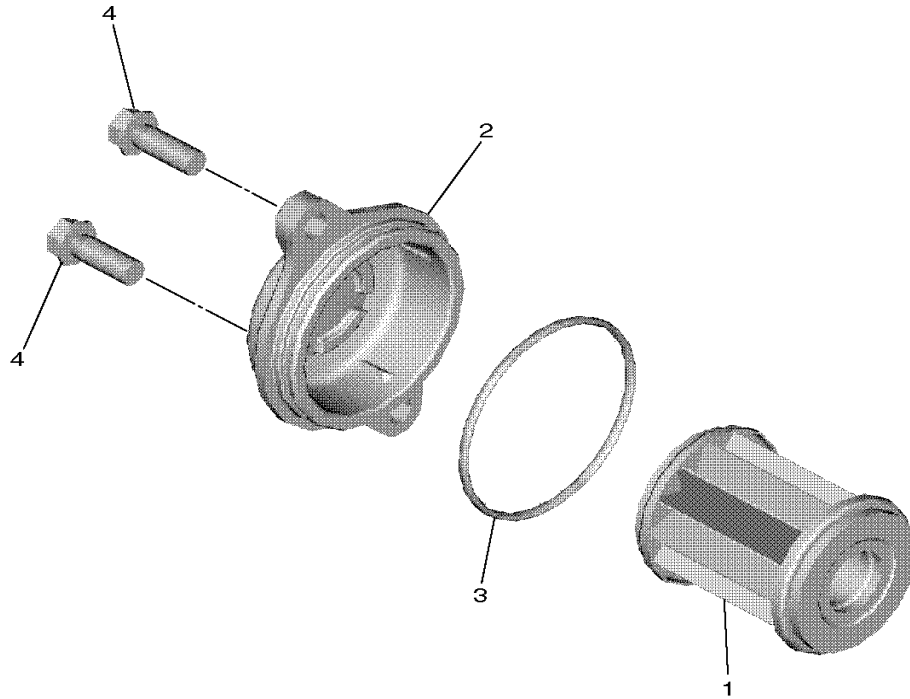


RIF.	CODICE	DESCRIZIONE	QUANTITA'	CONFIGURAZIONE
1	1SM-13300-00	OIL PUMP ASSY	1	STANDARD
2	90110-05033	BOLT, HEXAGON SOCKET HEAD	2	LIBERO
3	90430-06156	GASKET	1	STANDARD
4	1SL-13411-10	STRAINER, OIL	1	STANDARD
5	93210-12010	O-RING	1	LIBERO
6	90159-06021	SCREW, WITH WASHER	1	LIBERO





## OIL CLEANER

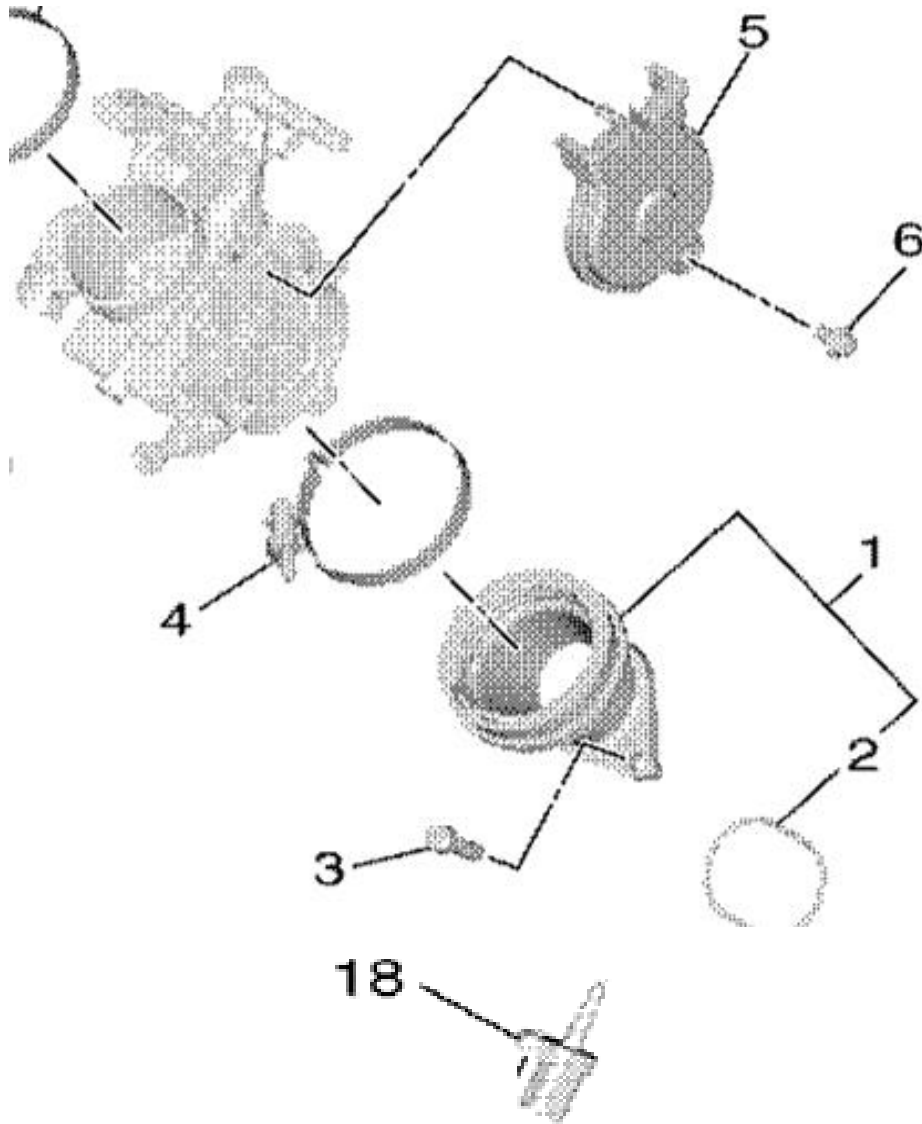


RIF.	CODICE	DESCRIZIONE	QUANTITA'	CONFIGURAZIONE
1	5D3-13440-02	ELEMENT ASSY, OIL CLEANER	1	STANDARD
2	1SL-13447-00	COVER, OIL ELEMENT	1	STANDARD
3	93210-45708	O-RING	1	LIBERO
4	95E32-06016	BOLT, FLANGE DEEP RECESS	2	LIBERO



## INTAKE JOINT & AIR SENSOR

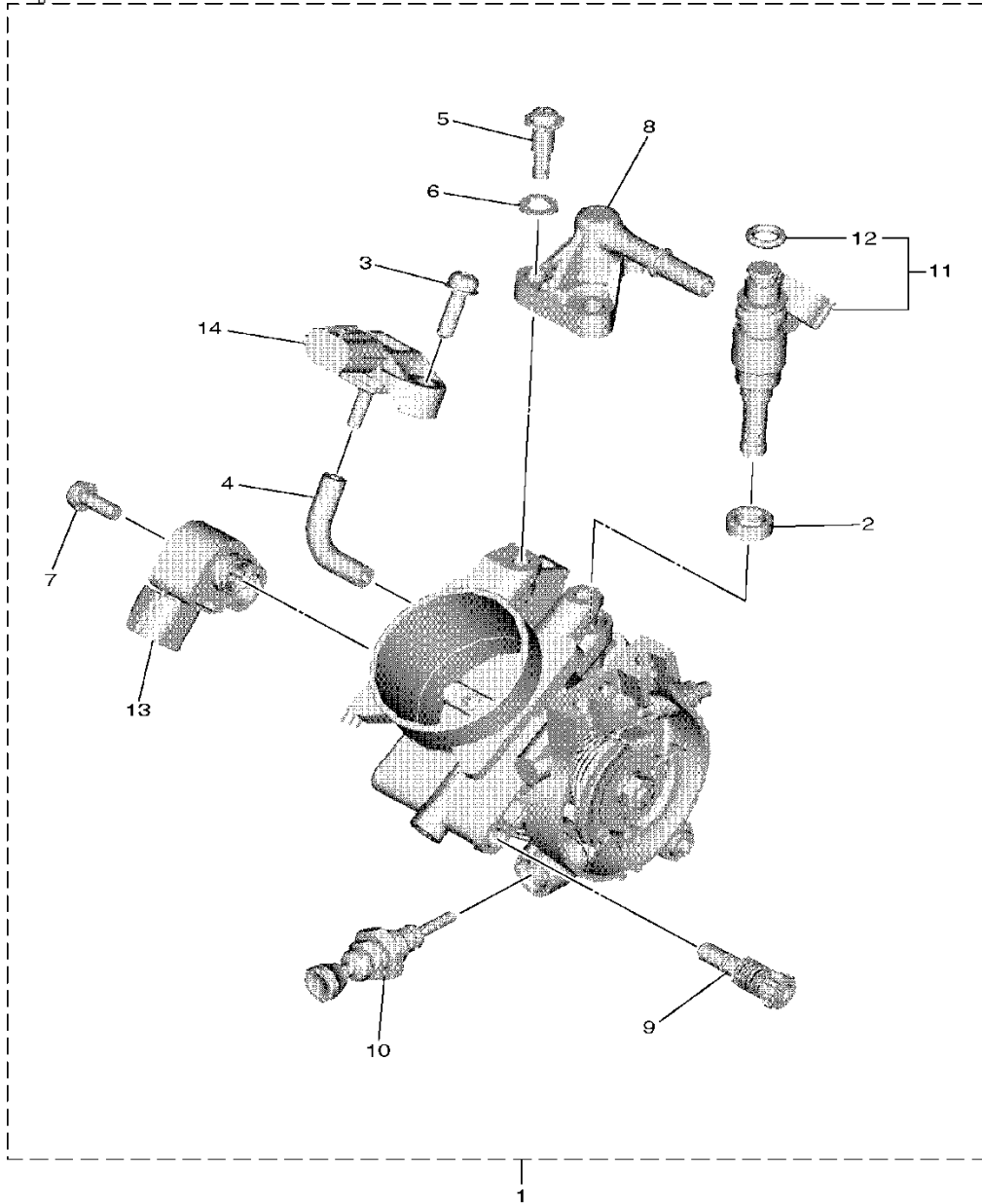
10



RIF.	CODICE	DESCRIZIONE	QUANTITA'	CONFIGURAZIONE
1	B7B-13597-01	JOINT, CARBURETOR	1	STANDARD
2	B7B-13566-00	GASKET	1	LIBERO
3	91312-06020	BOLT, HEXAGON SOCKET HEAD	2	LIBERO
4	90450-60004	HOSE CLAMP ASSY	1	LIBERO
5	BR9-14293-00	COVER 1	1	STANDARD
6	90110-05066	BOLT, HEXAGON SOCKET HEAD	1	LIBERO
18	5YU-85886-00	SENSOR, AIR TEMPERATURE	1	STANDARD



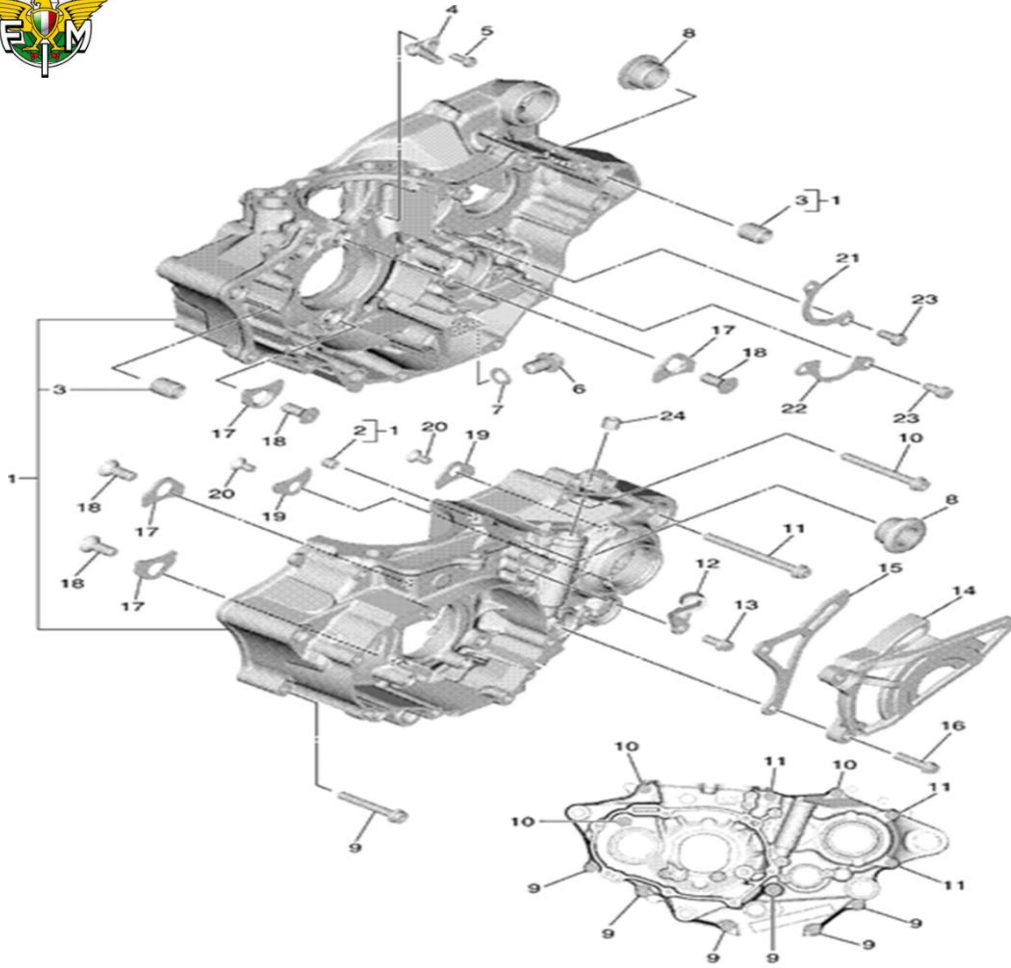
## INTAKE - THROTTLE BODY



RIF.	CODICE	DESCRIZIONE	QUANTITA'	CONFIGURAZIONE
1	B7B-13750-00	THROTTLE BODY ASSY	1	STANDARD
2	8FP-13556-00	RUBBER, INJECTOR	1	STANDARD
3	2C0-14216-00	SCREW	1	LIBERO
4	BR9-14348-00	PIPE 1	1	STANDARD
5	BR9-14486-00	SCREW, ROD	2	STANDARD
6	363-14198-00	GASKET	2	LIBERO
7	8CC-14216-10	SCREW	1	LIBERO
8	BR9-13160-00	DELIVERY PIPE ASSY 1	1	STANDARD
9	5VX-14503-00	ADJUST SCREW SET	1	STANDARD
10	BR9-1410A-00	STARTER SET	1	STANDARD
11	4C8-13761-00	INJECTOR	1	STANDARD
12	5PS-14147-00	O-RING	1	LIBERO
13	BR9-85885-00	THROTTLE SENSOR ASSY	1	STANDARD
14	2C0-82380-00	SENSOR, PRESSURE	1	STANDARD



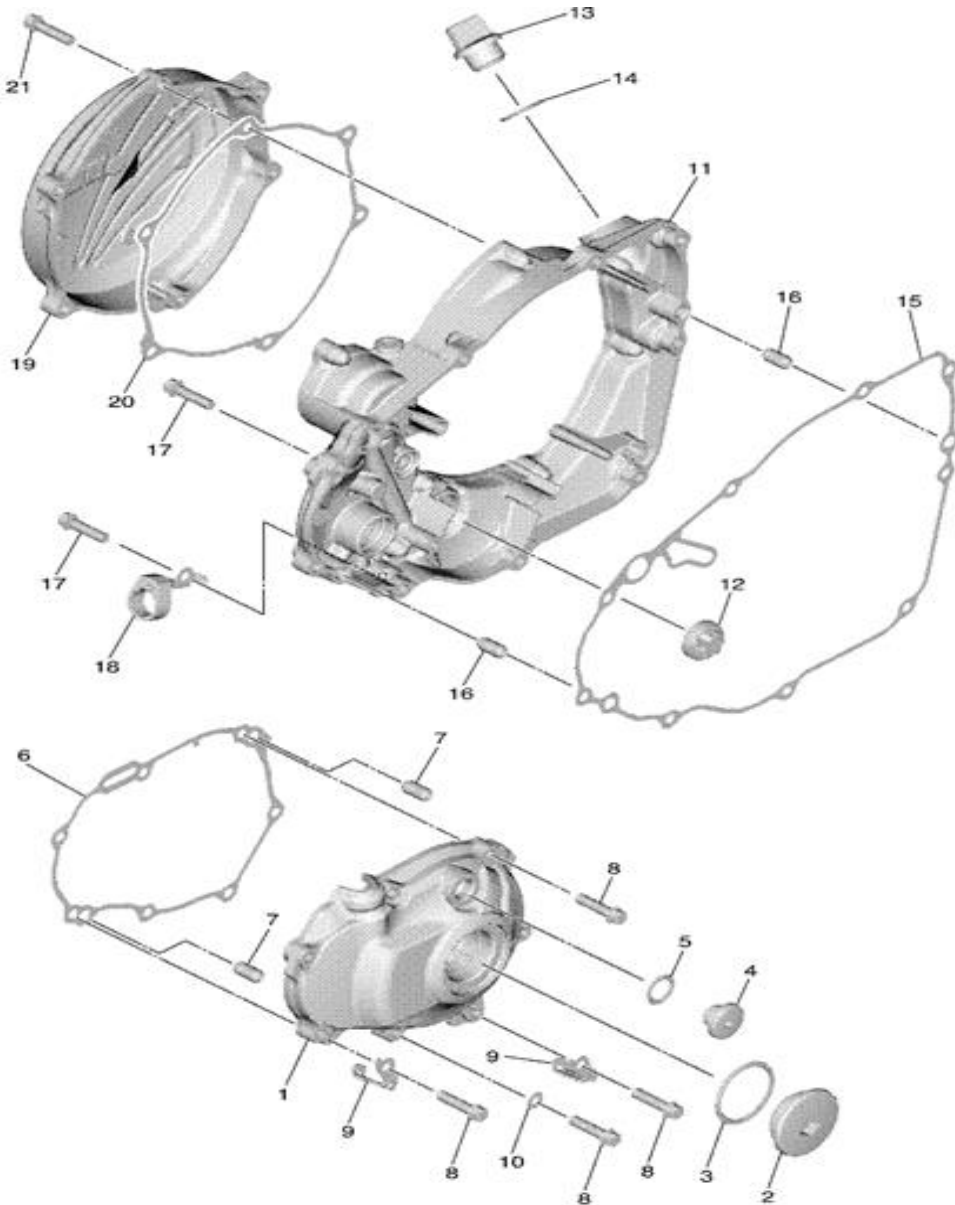
## CRANKCASE



RIF.	CODICE	DESCRIZIONE	QUANTITA'	CONFIGURAZIONE
1	B7B-15100-09	CRANKCASE ASSY	1	STANDARD
2	B7B-15138-00	NOZZLE 1	1	STANDARD
3	99530-14016	PIN, DOWEL	2	LIBERO
4	1SM-15155-10	NOZZLE 3	1	STANDARD
5	90110-05032	BOLT, HEXAGON SOCKET HEAD	1	LIBERO
6	95E32-10016	BOLT, FLANGE DEEP RECESS	1	LIBERO
7	90430-10188	GASKET	1	LIBERO
8	90387-17018	COLLAR	2	LIBERO
9	90110-06391	BOLT, HEXAGON SOCKET HEAD	6	LIBERO
10	90110-06363	BOLT, HEXAGON SOCKET HEAD	3	LIBERO
11	90110-06392	BOLT, HEXAGON SOCKET HEAD	3	LIBERO
12	1SL-15441-00	HOLDER, CLUTCH CABLE	1	LIBERO
13	90105-06099	BOLT, FLANGE	2	LIBERO
14	1SL-15421-00	COVER, CRANKCASE 2	1	LIBERO
15	1SL-17466-00	GUIDE, CHAIN	1	LIBERO
16	90105-06189	BOLT, FLANGE	2	LIBERO
17	18P-15383-00	PLATE, BEARING COVER	4	STANDARD
18	90151-08007	SCREW, COUNTERSUNK	4	STANDARD
19	4JT-15381-01	PLATE, BEARING COVER	2	STANDARD
20	90151-06053	SCREW, COUNTERSUNK	2	STANDARD
21	B7B-15388-00	PLATE, BEARING COVER	1	STANDARD
22	1SL-18562-00	PLATE, STOPPER 2	1	STANDARD
23	90110-06182	BOLT, HEXAGON SOCKET HEAD	4	LIBERO
24	93317-106B4	BEARING	1	LIBERO



## CRANKCASE COVER 1

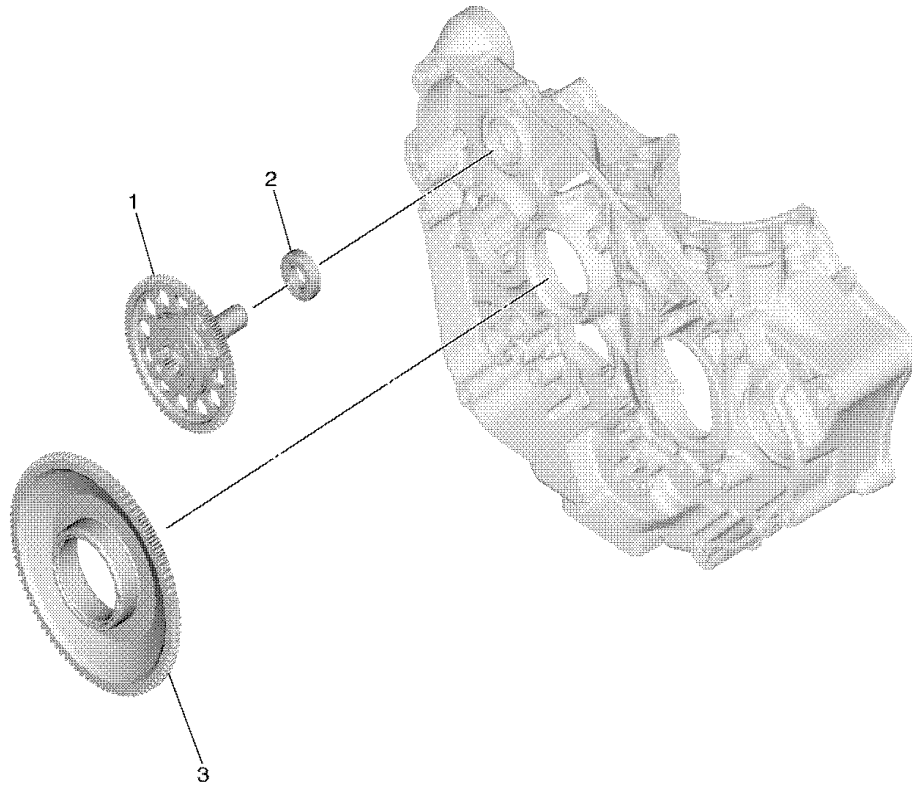


RIF.	CODICE	DESCRIZIONE	QUANTITA'	CONFIGURAZIONE
1	B7B-15411-00	COVER, CRANKCASE 1	1	STANDARD
2	90340-36007	PLUG, STRAIGHT SCREW	1	STANDARD
3	93210-357A3	O-RING	1	LIBERO
4	90340-14021	PLUG, STRAIGHT SCREW	1	STANDARD
5	93210-14369	O-RING	1	LIBERO
6	B7B-15451-00	GASKET, CRANKCASE COVER 1	1	LIBERO
7	99530-08016	PIN, DOWEL	2	LIBERO
8	95E32-06025	BOLT, FLANGE DEEP RECESS	7	LIBERO
9	90465-08062	CLAMP	2	LIBERO
10	90430-06014	GASKET	2	LIBERO
11	B7B-15431-00	COVER, CRANKCASE 3	1	STANDARD
12	3Y1-15361-00	GAUGE, LEVEL	1	STANDARD
13	3Y1-15363-10	PLUG, OIL	1	LIBERO
14	93210-19123	O-RING	1	LIBERO
15	B7B-15462-00	GASKET, CRANKCASE COVER 3	1	LIBERO
16	99530-08016	PIN, DOWEL	2	LIBERO
17	95E32-06025	BOLT, FLANGE DEEP RECESS	9	LIBERO
18	17D-15378-00	HOLDER	1	LIBERO
19	B7B-15415-00	COVER, 1	1	STANDARD
20	B7B-15453-00	GASKET	1	LIBERO
21	95E32-06025	BOLT, FLANGE DEEP RECESS	6	LIBERO



## STARTER DAMPER

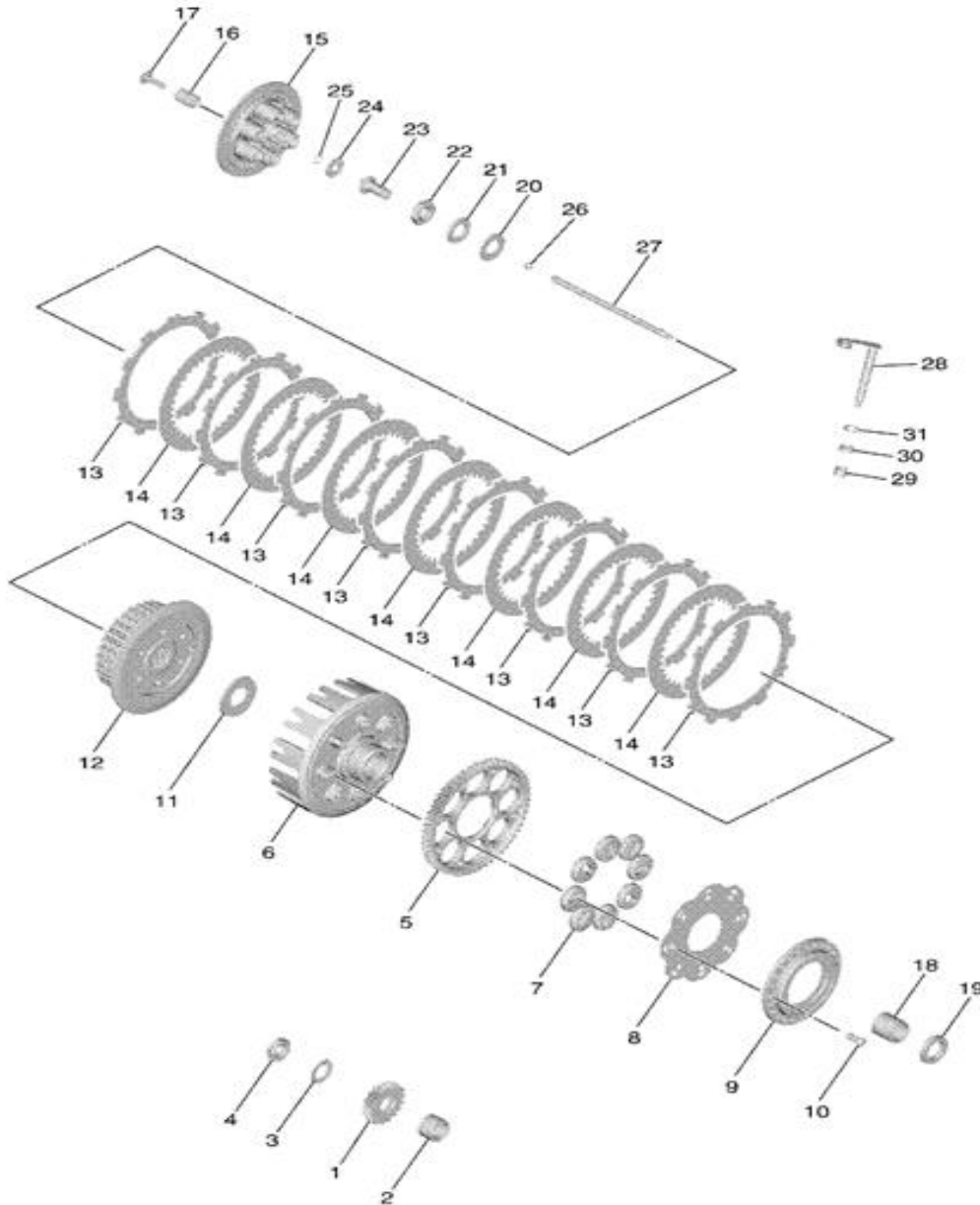
14



RIF.	CODICE	DESCRIZIONE	QUANTITA'	CONFIGURAZIONE
1	B7B-15560-00	DAMPER ASSY	1	STANDARD
2	93306-90103	BEARING	1	LIBERO
3	B7B-15515-00	GEAR 3	1	STANDARD



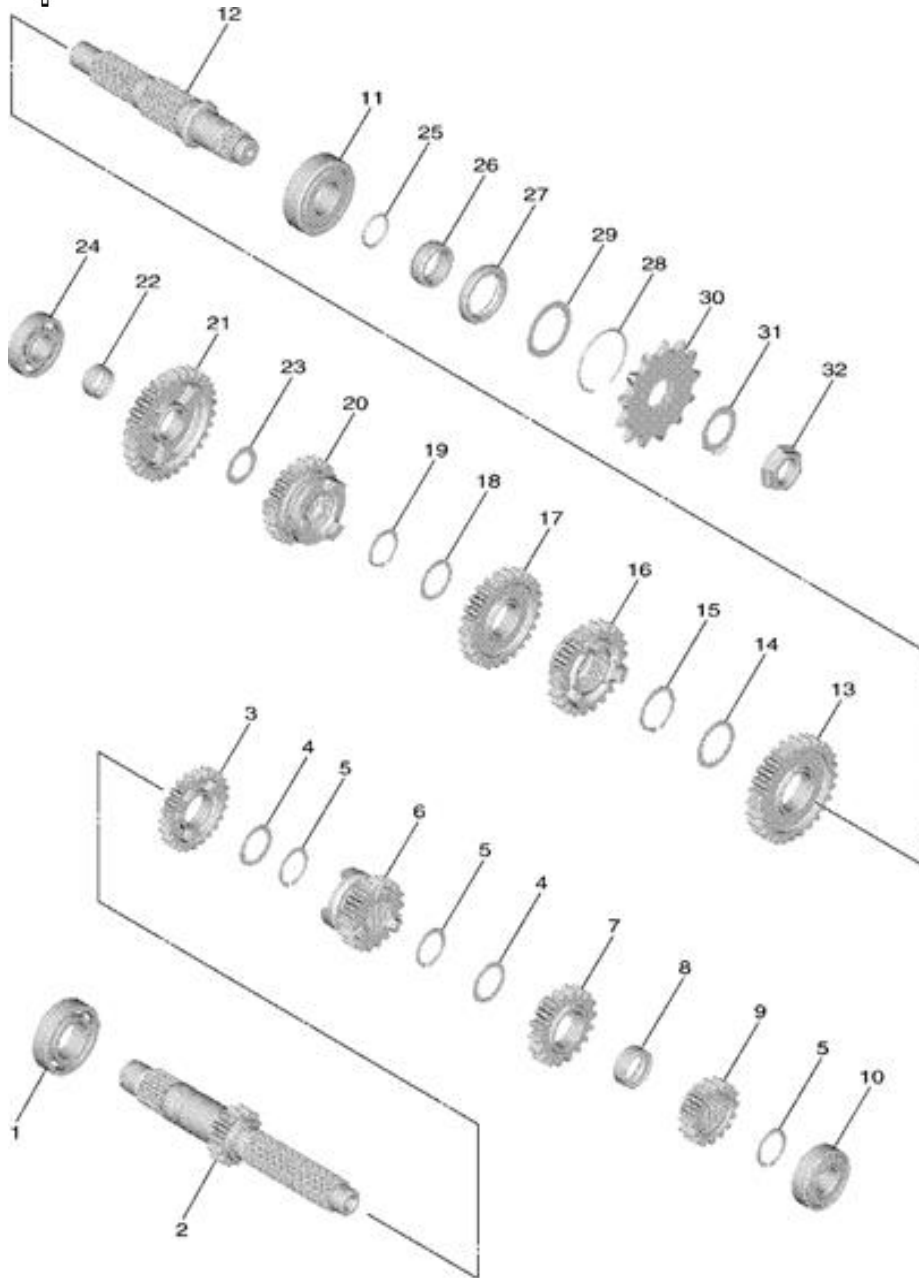
## CLUTCH & PRIMARY GEAR



RIF.	CODICE	DESCRIZIONE	QUANTITA'	CONFIGURAZIONE
1	B7B-16111-00	GEAR, PRIMARY DRIVE	1	STANDARD
2	90387-19009	COLLAR	1	STANDARD
3	90208-16019	WASHER, CONICAL SPRING	1	LIBERO
4	90170-16009	NUT	1	LIBERO
5	B7B-16151-00	GEAR, PRIMARY DRIVEN	1	STANDARD
6	B7B-16310-00	CLUTCH HOUSING ASSY	1	LIBERO
7	5XC-16165-00	ABSORBER	8	LIBERO
8	B7B-16158-00	PLATE, SIDE	1	LIBERO
9	B7B-15570-00	STARTER CLUTCH ASSY	1	STANDARD
10	90149-06166	SCREW	8	LIBERO
11	5XD-16154-00	PLATE, THRUST 1	1	LIBERO
12	B7B-16371-00	BOSS, CLUTCH	1	LIBERO
13	B7B-16321-00	PLATE, FRICTION	8	LIBERO
14	B7B-16325-00	PLATE, CLUTCH 2	7	LIBERO
15	B7B-16351-00	PLATE, PRESSURE 1	1	LIBERO
16	90501-230A7	SPRING, COMPRESSION	6	LIBERO
17	90159-06061	SCREW, WITH WASHER	6	LIBERO
18	B7B-16181-00	SPACER 1	1	LIBERO
19	90387-25038	COLLAR	1	LIBERO
20	90201-20030	WASHER, PLATE	1	LIBERO
21	90208-20001	WASHER, CONICAL SPRING	1	LIBERO
22	90179-20007	NUT	1	LIBERO
23	BR9-16356-00	ROD, PUSH 1	1	LIBERO
24	93340-21209	BEARING	1	LIBERO
25	93440-10085	CIRCLIP	1	LIBERO
26	93511-32027	BALL	1	LIBERO
27	B7B-16357-00	ROD, PUSH 2	1	LIBERO
28	B7B-16381-00	PUSH LEVER COMP.	1	LIBERO
29	93317-11096	BEARING	1	LIBERO
30	93102-10008	OIL SEAL	1	LIBERO
31	99009-18500	CIRCLIP	1	LIBERO



## TRANSMISSION



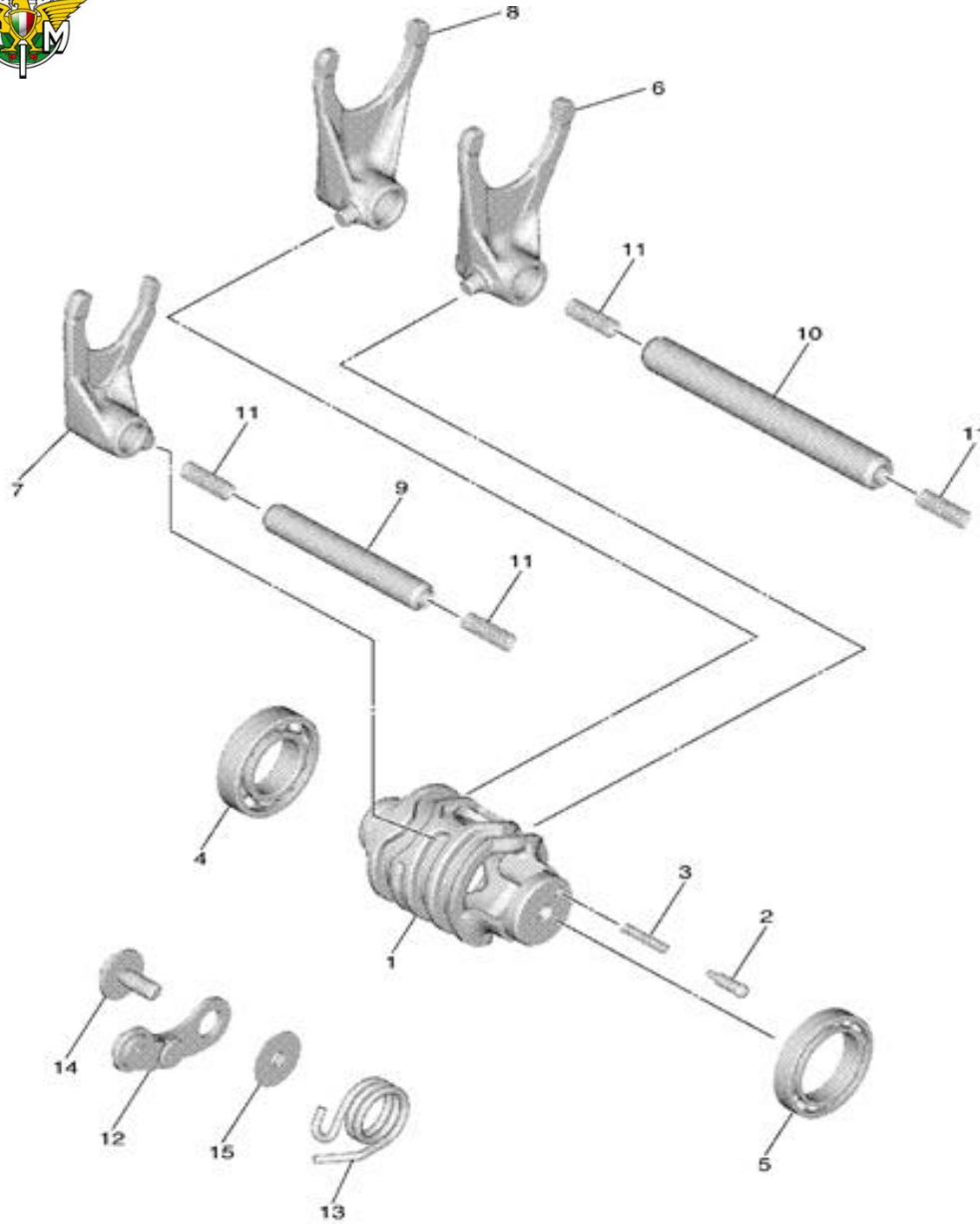
PLYZF-19 vers.002

RIF.	CODICE	DESCRIZIONE	QUANTITA'	CONFIGURAZIONE
1	93306-00525	BEARING	1	LIBERO
2	B7B-17411-00	AXLE, MAIN	1	STANDARD
3	B7B-17151-00	GEAR, 5TH PINION	1	STANDARD
4	90209-20008	WASHER	2	STANDARD
5	93410-22039	CIRCLIP	3	STANDARD
6	B7B-17131-00	GEAR, 3RD PINION	1	STANDARD
7	B7B-17141-00	GEAR, 4TH PINION	1	STANDARD
8	90387-20006	COLLAR	1	STANDARD
9	1SM-17121-00	GEAR, 2ND PINION (16T)	1	STANDARD
10	93306-20336	BEARING	1	LIBERO
11	93306-27209	BEARING	1	LIBERO
12	B7B-1742A-00	DRIVE AXLE ASSY.,2	1	STANDARD
13	1SM-17221-20	GEAR, 2ND WHEEL (28T)	1	STANDARD
14	90209-23012	WASHER	1	STANDARD
15	93410-26067	CIRCLIP	1	STANDARD
16	B7B-17241-00	GEAR, 4TH WHEEL	1	STANDARD
17	B7B-17231-00	GEAR, 3RD WHEEL	1	STANDARD
18	90209-20008	WASHER	1	STANDARD
19	93410-22039	CIRCLIP	1	STANDARD
20	B7B-17251-00	GEAR, 5TH WHEEL	1	STANDARD
21	B7B-17211-00	GEAR, 1ST WHEEL	1	STANDARD
22	90387-17012	COLLAR	1	STANDARD
23	90201-177G4	WASHER, PLATE	1	STANDARD
24	93306-20351	BEARING	1	LIBERO
25	93210-196A4	O-RING	1	LIBERO
26	90387-22036	COLLAR	1	STANDARD
27	93102-28012	OIL SEAL	1	LIBERO
28	93450-40N50	CIRCLIP	1	LIBERO
29	90201-29M00	WASHER, PLATE	1	LIBERO
30	9383B-13218	SPROCKET, DRIVE (13T)	1	LIBERO
31	90215-20003	WASHER, LOCK	1	LIBERO
32	90179-18001	NUT	1	LIBERO





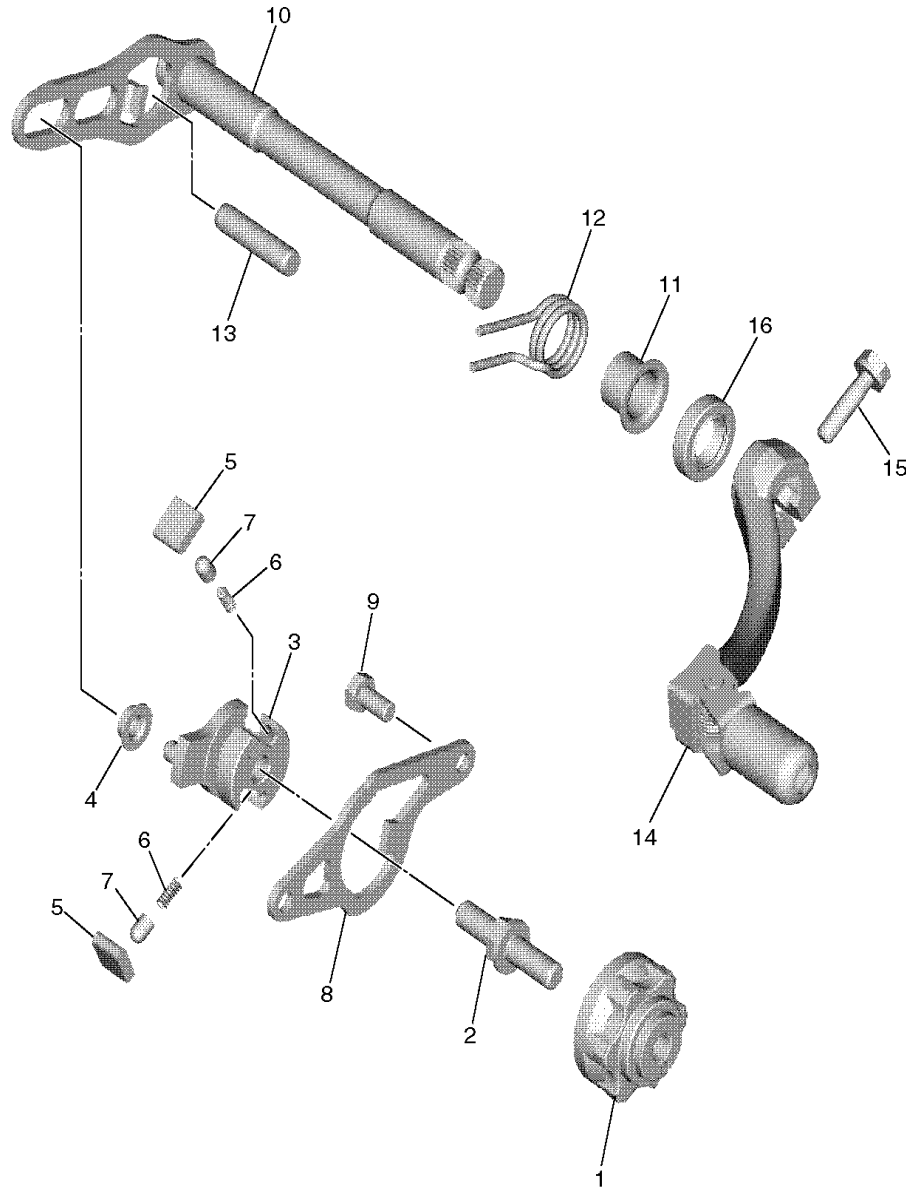
## SHIFT CAM & FORK



RIF.	CODICE	DESCRIZIONE	QUANTITA'	CONFIGURAZIONE
1	B7B-18541-00	CAM, SHIFT	1	STANDARD
2	3D7-18542-00	POINT, NEUTRAL	1	STANDARD
3	90501-06022	SPRING, COMPRESSION	1	STANDARD
4	93306-90409	BEARING	1	LIBERO
5	93306-80502	BEARING	1	LIBERO
6	1SM-18511-00	FORK, SHIFT 1	1	STANDARD
7	1SM-18512-10	FORK, SHIFT 2	1	STANDARD
8	1SM-18513-00	FORK, SHIFT 3	1	STANDARD
9	1SL-18531-00	BAR, SHIFT FORK GUIDE 1	1	STANDARD
10	1SL-18535-00	BAR, SHIFT FORK GUIDE 2	1	STANDARD
11	90501-064L1	SPRING, COMPRESSION	4	STANDARD
12	2GB-18140-10	STOPPER LEVER ASSY	1	STANDARD
13	90508-29041	SPRING, TORSION	1	STANDARD
14	90159-06027	SCREW, WITH WASHER	1	LIBERO
15	33D-18175-00	SPACER	1	STANDARD



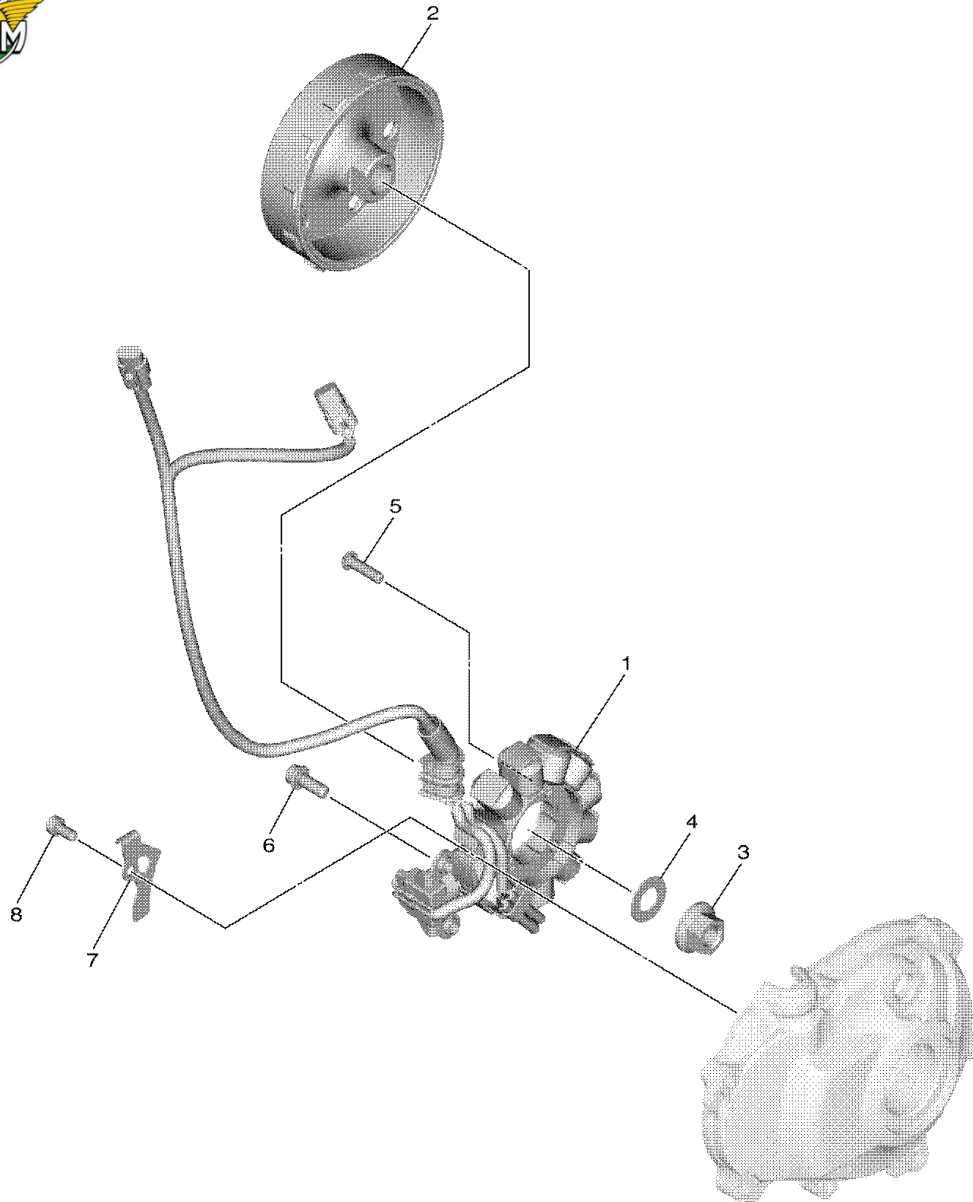
## SHIFT SHAFT



RIF.	CODICE	DESCRIZIONE	QUANTITA'	CONFIGURAZIONE
1	2GB-18185-00	SEGMENT	1	STANDARD
2	3XJ-18173-10	PIN, SHIFT	1	STANDARD
3	1SL-18122-10	LEVER, SHIFT 2	1	STANDARD
4	3XJ-18178-00	ROLLER, SHIFT LEVER	1	STANDARD
5	3XJ-18182-00	PAWL, SHIFTER	2	STANDARD
6	90501-052G5	SPRING, COMPRESSION	2	STANDARD
7	3XJ-18184-00	PIN, PAWL	2	STANDARD
8	1SL-18172-00	GUIDE, SHIFT	1	STANDARD
9	90101-06041	BOLT	2	LIBERO
10	1SM-18101-00	SHIFT SHAFT ASSY	1	STANDARD
11	90387-14020	COLLAR	1	STANDARD
12	90508-29023	SPRING, TORSION	1	STANDARD
13	93608-33002	PIN, DOWEL	1	STANDARD
14	BR9-18110-00	SHIFT PEDAL ASSY	1	LIBERO
15	90119-06M12	BOLT, WITH WASHER	1	LIBERO
16	93109-14010	OIL SEAL	1	LIBERO



## GENERATOR

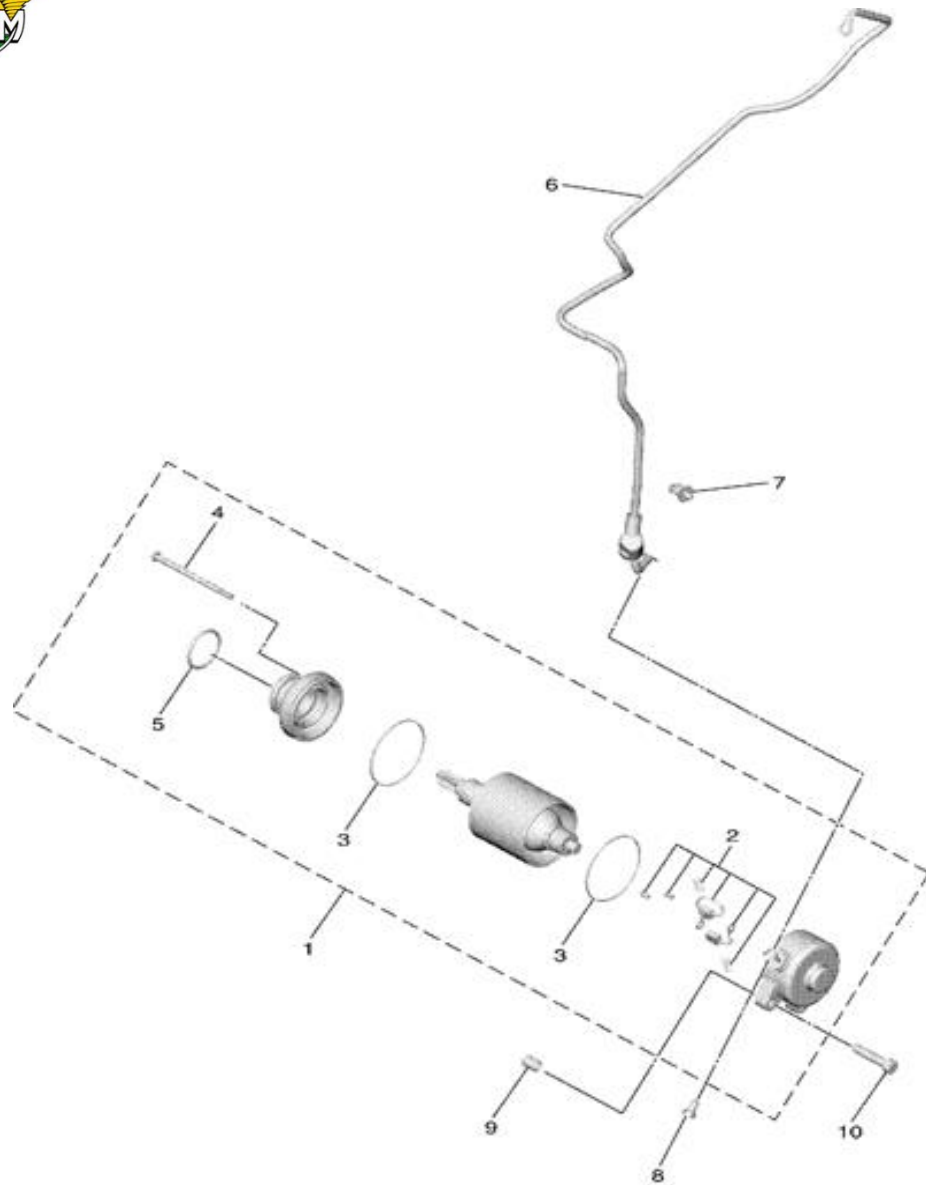


RIF.	CODICE	DESCRIZIONE	QUANTITA'	CONFIGURAZIONE
1	BR9-81410-00	STATOR ASSY	1	STANDARD
2	BR9-81450-00	ROTOR ASSY	1	STANDARD
3	90179-12657	NUT	1	LIBERO
4	90201-127E1	WASHER, PLATE	1	LIBERO
5	90149-05040	SCREW	3	LIBERO
6	90110-06401	BOLT, HEXAGON SOCKET HEAD	2	LIBERO
7	BR9-81528-00	CLAMP 1	1	LIBERO
8	90110-05003	BOLT, HEXAGON SOCKET HEAD	1	LIBERO



## STARTING MOTOR

20

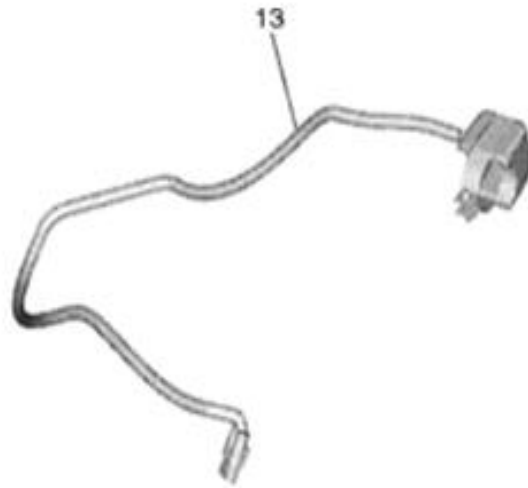


RIF.	CODICE	DESCRIZIONE	QUANTITA'	CONFIGURAZIONE
1	B7B-81890-00	MOTOR ASSY	1	STANDARD
2	2GC-81801-00	BRUSH SET	1	STANDARD
3	2GB-81861-00	GASKET	2	LIBERO
4	2GB-81828-00	BOLT 2	2	LIBERO
5	93210-25711	O-RING	1	LIBERO
6	B7B-8183G-00	CORD COMP.	1	LIBERO
7	90464-30011	CLAMP	1	LIBERO
8	5TJ-81828-01	BOLT 2	1	LIBERO
9	99590-08012	PIN, DOWEL	2	LIBERO
10	91312-06030	BOLT, HEXAGON SOCKET HEAD	2	LIBERO



## HANDLE SWITCH

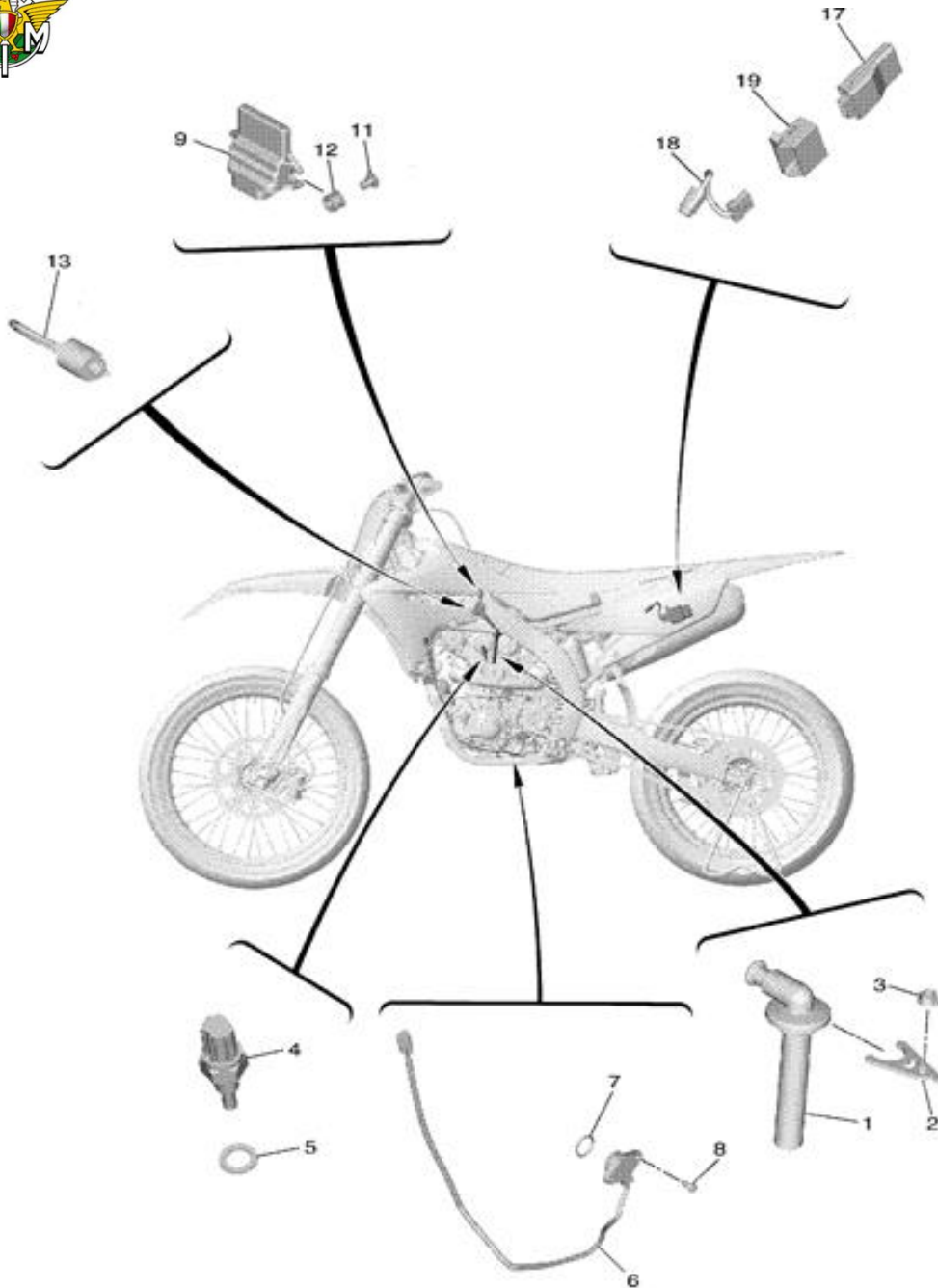
21



RIF.	CODICE	DESCRIZIONE	QUANTITA'	CONFIGURAZIONE
11	2GB-83976-00	SWITCH, HANDLE 1	1	LIBERO
13	1SL-83976-00	SWITCH, HANDLE 1	1	LIBERO



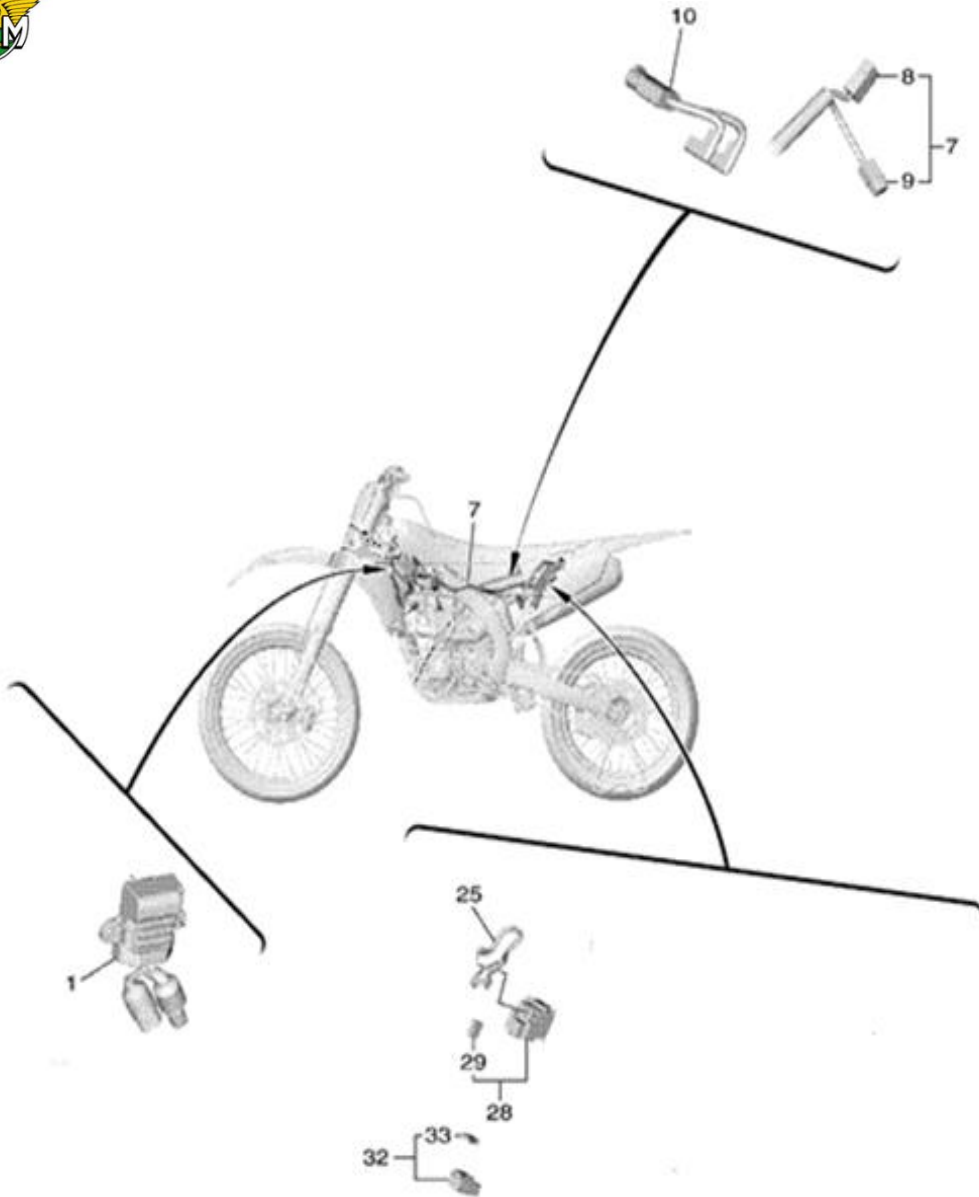
## ELECTRICAL 1



RIF.	CODICE	DESCRIZIONE	QUANTITA'	CONFIGURAZIONE
1	1SM-82370-00	PLUG CAP ASSY	1	STANDARD
2	BR9-11395-00	HOLDER	1	STANDARD
3	95702-06500	NUT, FLANGE	1	LIBERO
4	4P9-83591-00	THERMO UNIT	1	STANDARD
5	90430-10004	GASKET	1	LIBERO
6	B11-82540-00	NEUTRAL SWITCH ASSY	1	STANDARD
7	93210-21001	O-RING	1	LIBERO
8	90110-05062	BOLT, HEXAGON SOCKET HEAD	2	LIBERO
9	B7B-8591A-10	ENGINE CONTROL UNIT ASSY	1	STANDARD
11	90387-05048	COLLAR	2	STANDARD
12	90480-13029	GROMMET	2	STANDARD
13	B7B-82310-00	IGNITION COIL ASSY	1	STANDARD
17	BR9-85810-00	COMMUNICATION CONT. UNIT ASSY	1	STANDARD
18	BR9-85721-00	WIRE, LEAD	1	LIBERO
19	BR9-85546-00	BAND	1	LIBERO



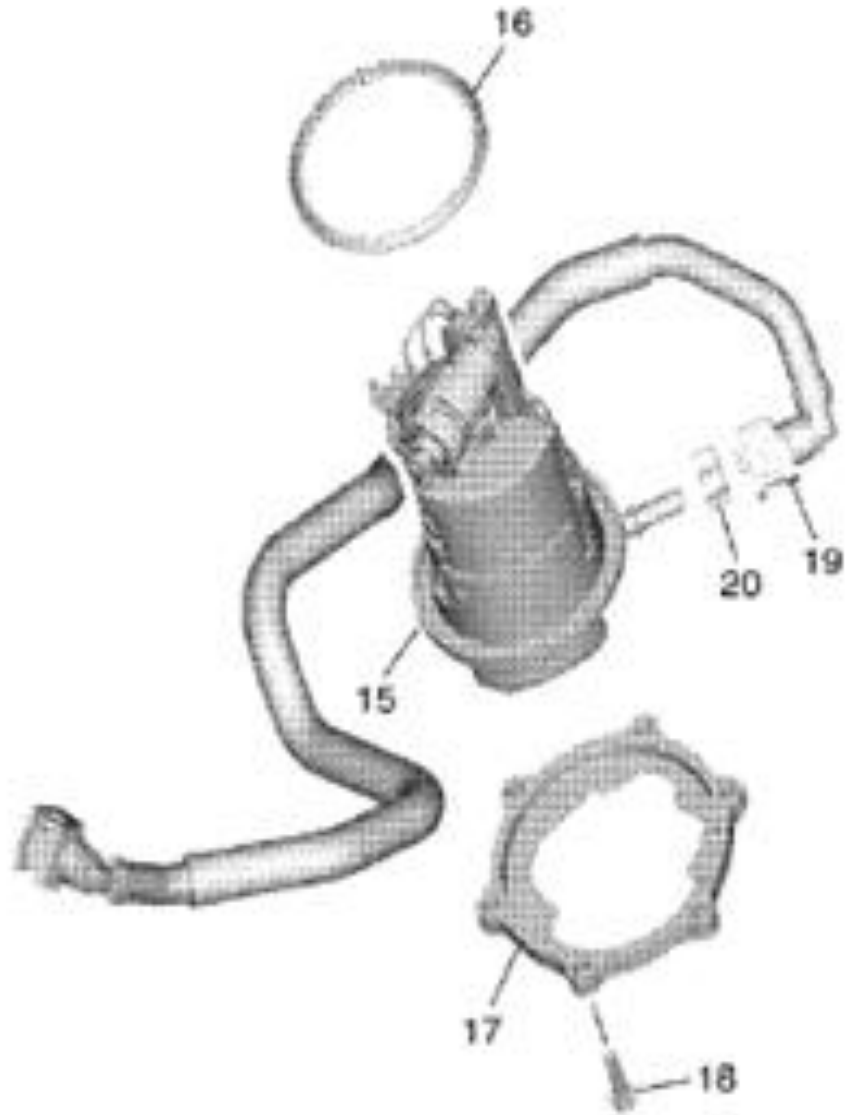
## ELECTRICAL 2



RIF.	CODICE	DESCRIZIONE	QUANTITA'	CONFIGURAZIONE
1	B7B-81960-00	RECTIFIER & REGULATOR ASSY	1	STANDARD
7	B7B-82590-00	WIRE HARNESS ASSY	1	STANDARD
8	4WA-81980-00	DIODE ASSY	1	STANDARD
9	3WP-81980-00	DIODE ASSY	2	STANDARD
10	1SL-82309-00	WIRE, SUB LEAD	1	LIBERO
25	BR9-82115-00	WIRE, PLUS LEAD	1	LIBERO
28	2GB-81940-00	STARTER RELAY ASSY (RC19-102B)	1	LIBERO
29	36Y-82151-00	FUSE (15A-BLUE)	1	LIBERO
32	1ST-81950-00	RELAY ASSY (1ST-00)	1	LIBERO
33	5JJ-81952-00	HOLDER, RELAY	1	LIBERO



### ELECTRICAL 3



RIF.	CODICE	DESCRIZIONE	QUANTITA'	CONFIGURAZIONE
15	33D-13907-01	FUEL PUMP COMP	1	STANDARD
16	33D-24486-00	O-RING FUEL PUMP	1	LIBERO
17	BR9-24491-00	BRACKET FUEL PUMP	1	STANDARD
19	BR9-13971-00	FUEL PIPE	1	LIBERO
20	33D-24135-00	CLAMP	1	LIBERO